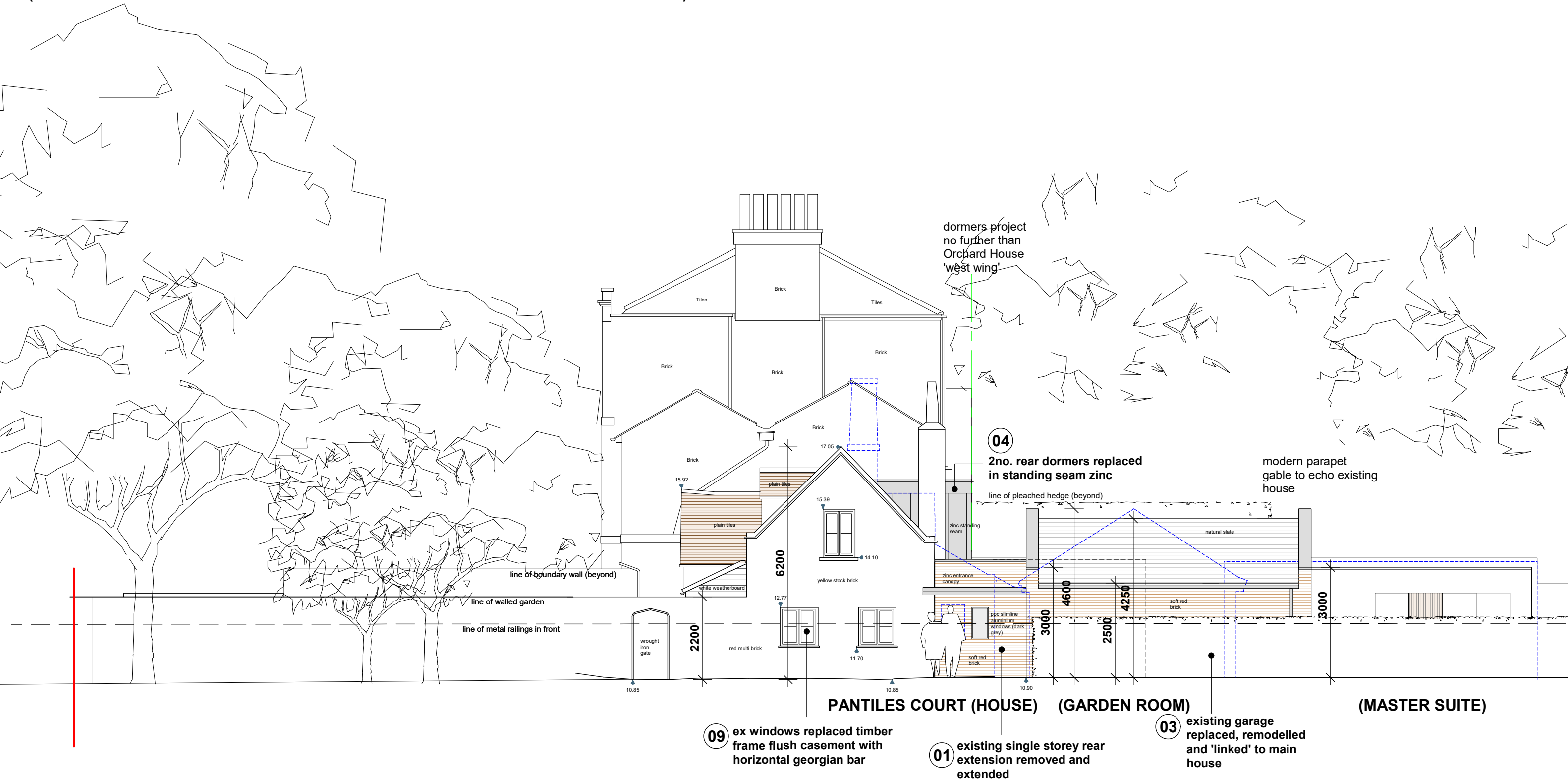


(ELEVATIONS TO BE READ IN CONJUNCTION WITH PCS-18 MATERIAL SPECIFICATION)



## EAST (SIDE) ELEVATION

## PLANNING

Project <b>PANTILES COURT, THAMES ST, SUNBURY, TW16 6AB</b>		hitchcock architects ltd	
Drawing <b>PROPOSED EAST (SIDE) ELEVATION</b>		18 The Avenue Sunbury-on-Thames Middx TW16 5ES	
Drawing No. <b>PCS-14</b>	Scale <b>1:100 @ A3</b>	Date <b>28.02.2024</b>	m: 07855 522478 e: andrew@hitchcockarchitects.co.uk w: www.hitchcockarchitects.co.uk

